

HOW LIJNBAAAN MET FORUM



URBAN STUDIO
led by OMA
2013-2014 SEMESTER 1

presentation by EMILIJA JUODYTE
research developed with YUTING GUAN



CONFERENTIELOKAL
DE BOVEN
1890-1900

ADRIJN GIELEN
1890-1900

DE HOEFBOUWEN
1890-1900

BLAM HOEFBOUWEN
1890-1900

ETIENSON LARIBAN
1890-1900

DE WISSEN
1890-1900

POSTKANTOOR
S-C B
1890-1900

DE WISSEN
1890-1900

DE BEURS
1890-1900

NYC
1890-1900

BEURS

BEURSSTRAVENEN
1890-1900

DE WISSEN
1890-1900

BEURS

ARTS MUSEUM
1890-1900

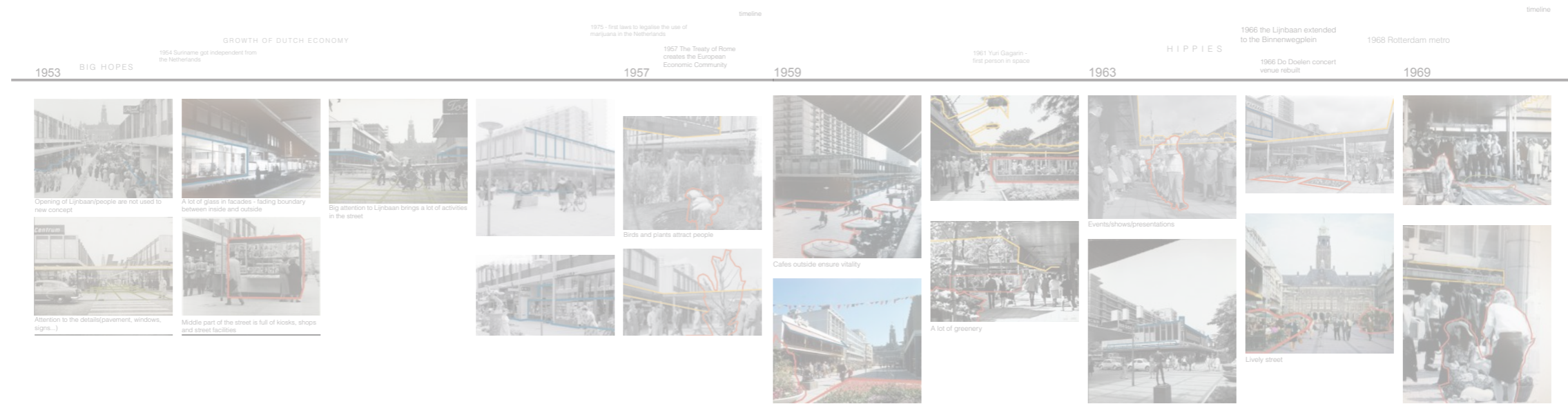
LIJNBAN

COOL-SINGEL

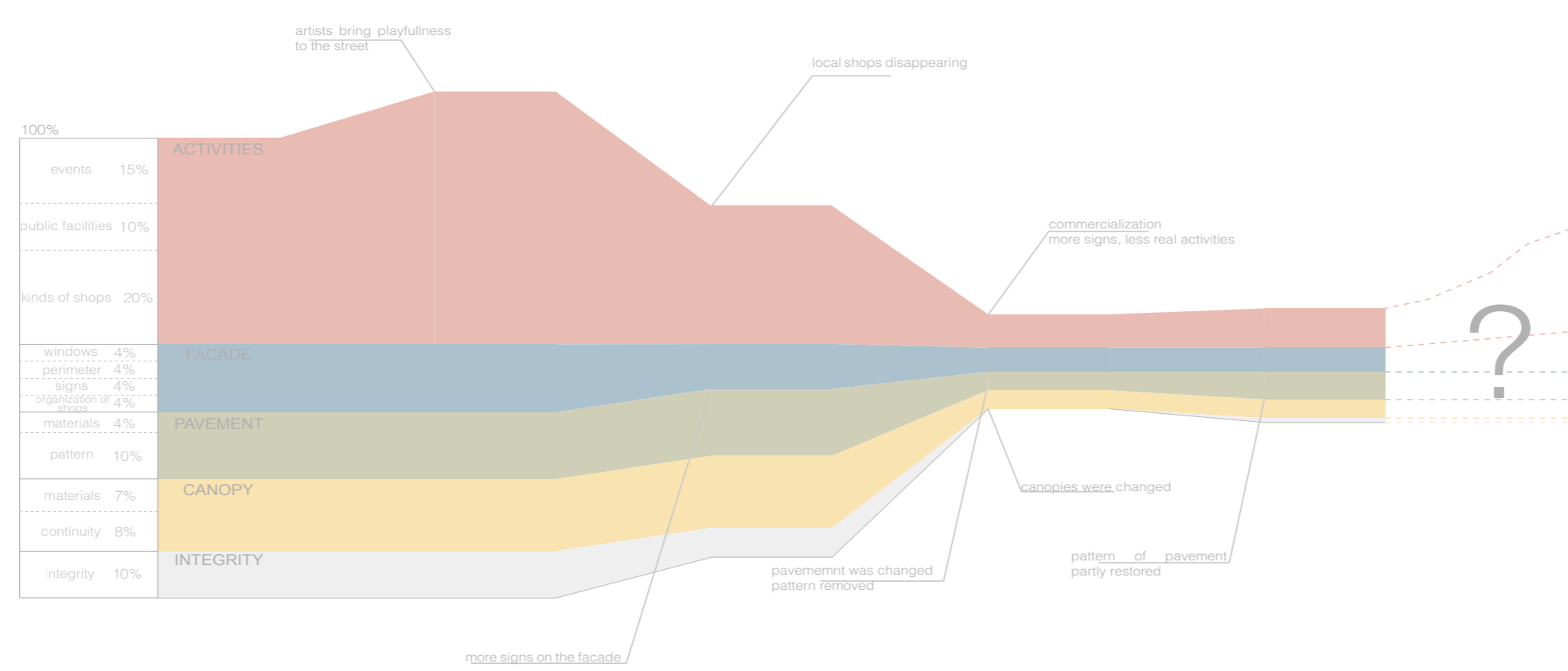
BEURSSTRAVENEN
WOOBSTRAT

BINNENWEG

BLAAK



FORMER IDENTITY OF LIJNBAAN IS DISAPPEARING THOUGH LIJNBAAN MANAGES TO ADAPT TO CHANGES



LIJNBAAN

FORUM



M E R G E

— Ц П З О С

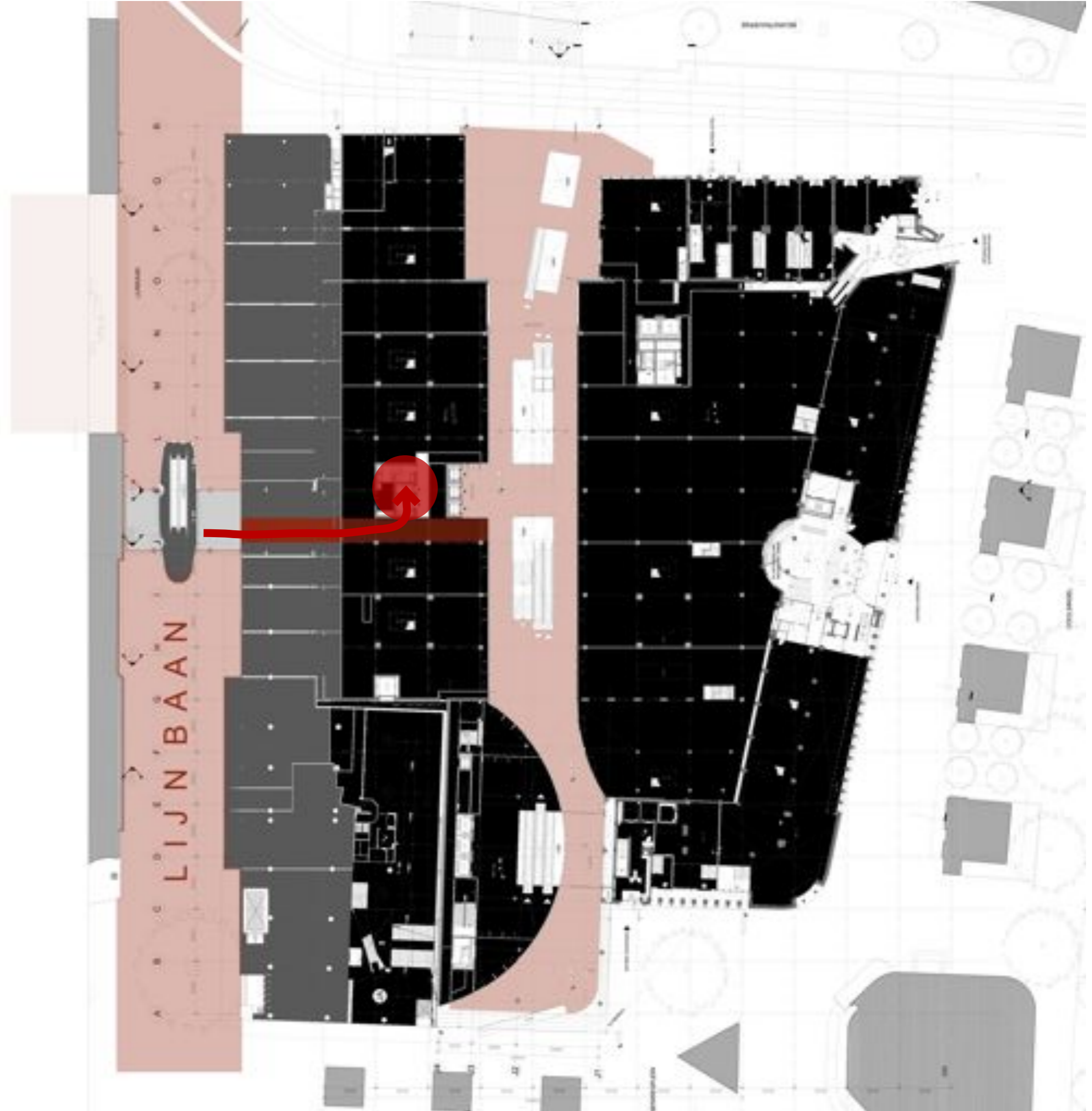




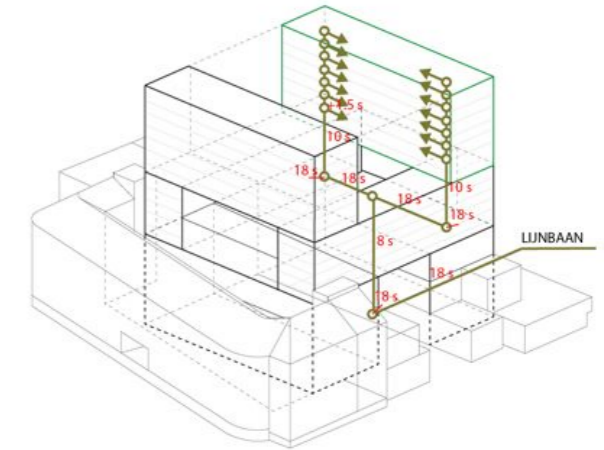
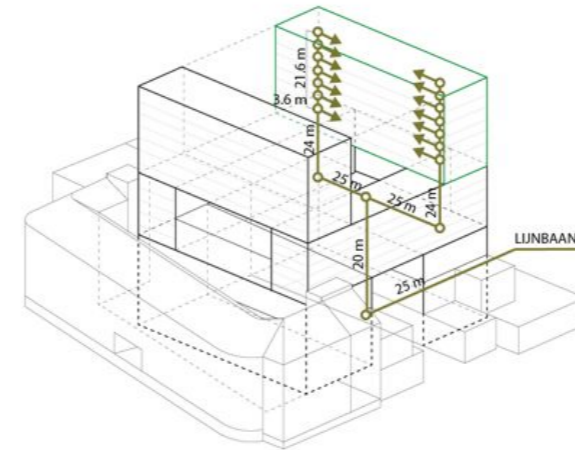
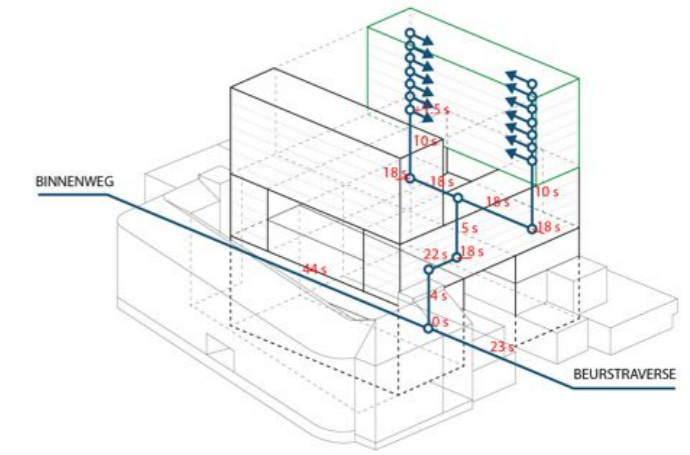
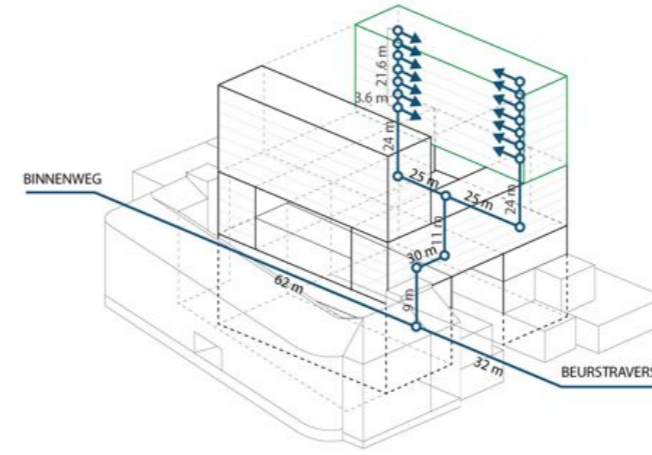
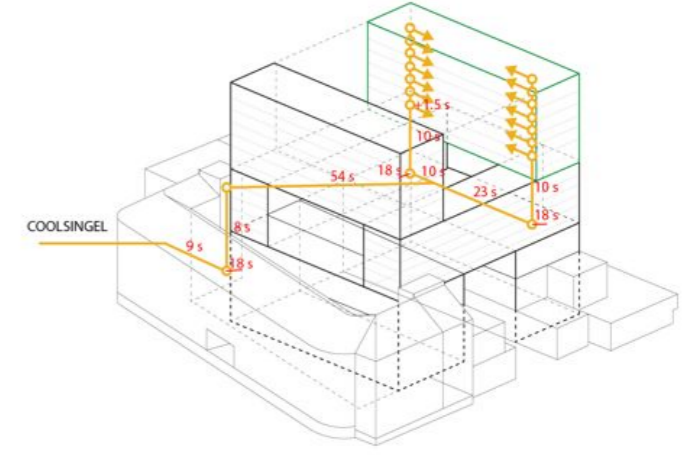
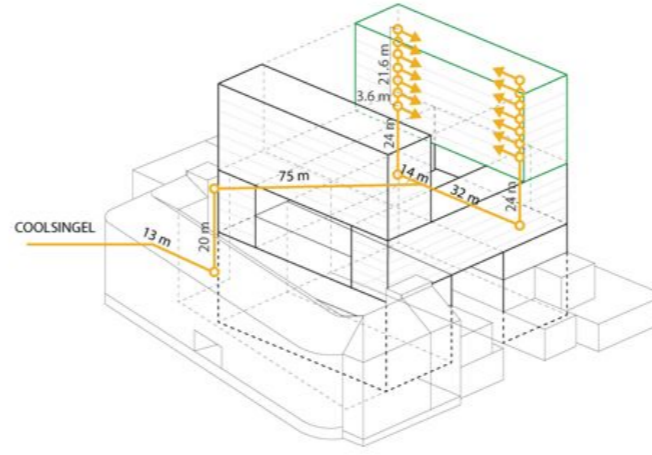
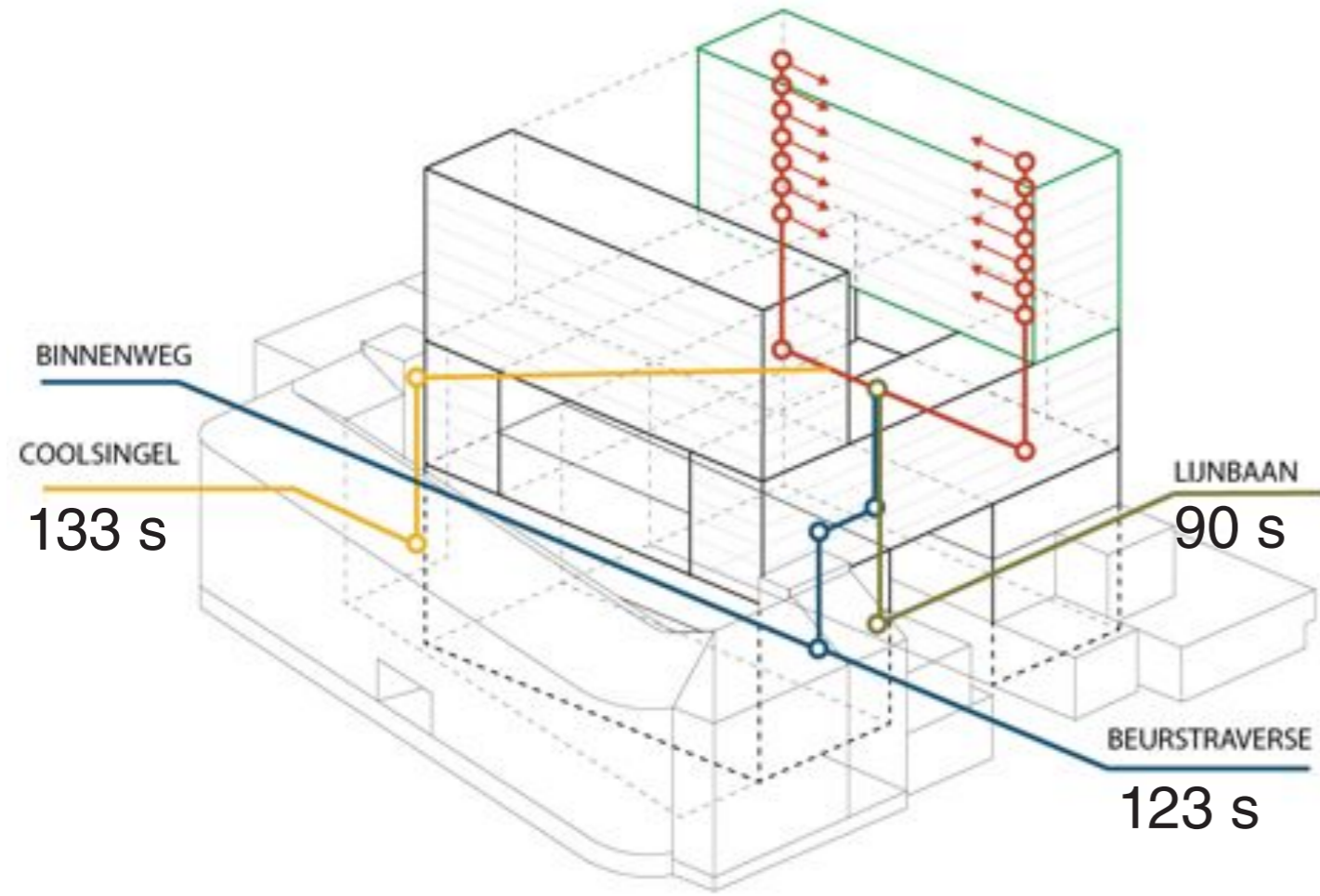
CONNECT

SHOPPING

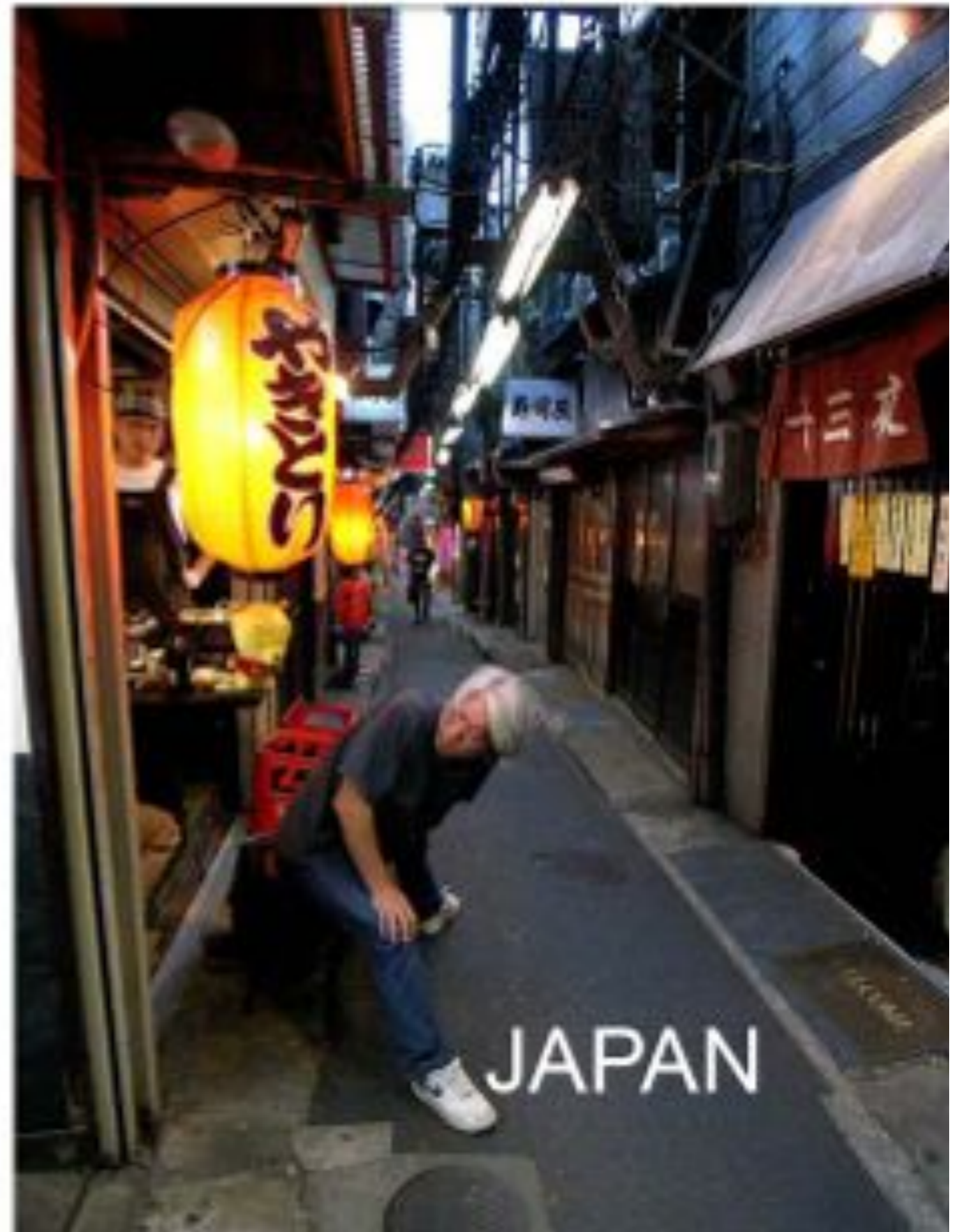
RESIDENTIAL



NEW RESIDENTIAL ENTRANCE



NARROW SPACES/ IN BETWEEN SPACES

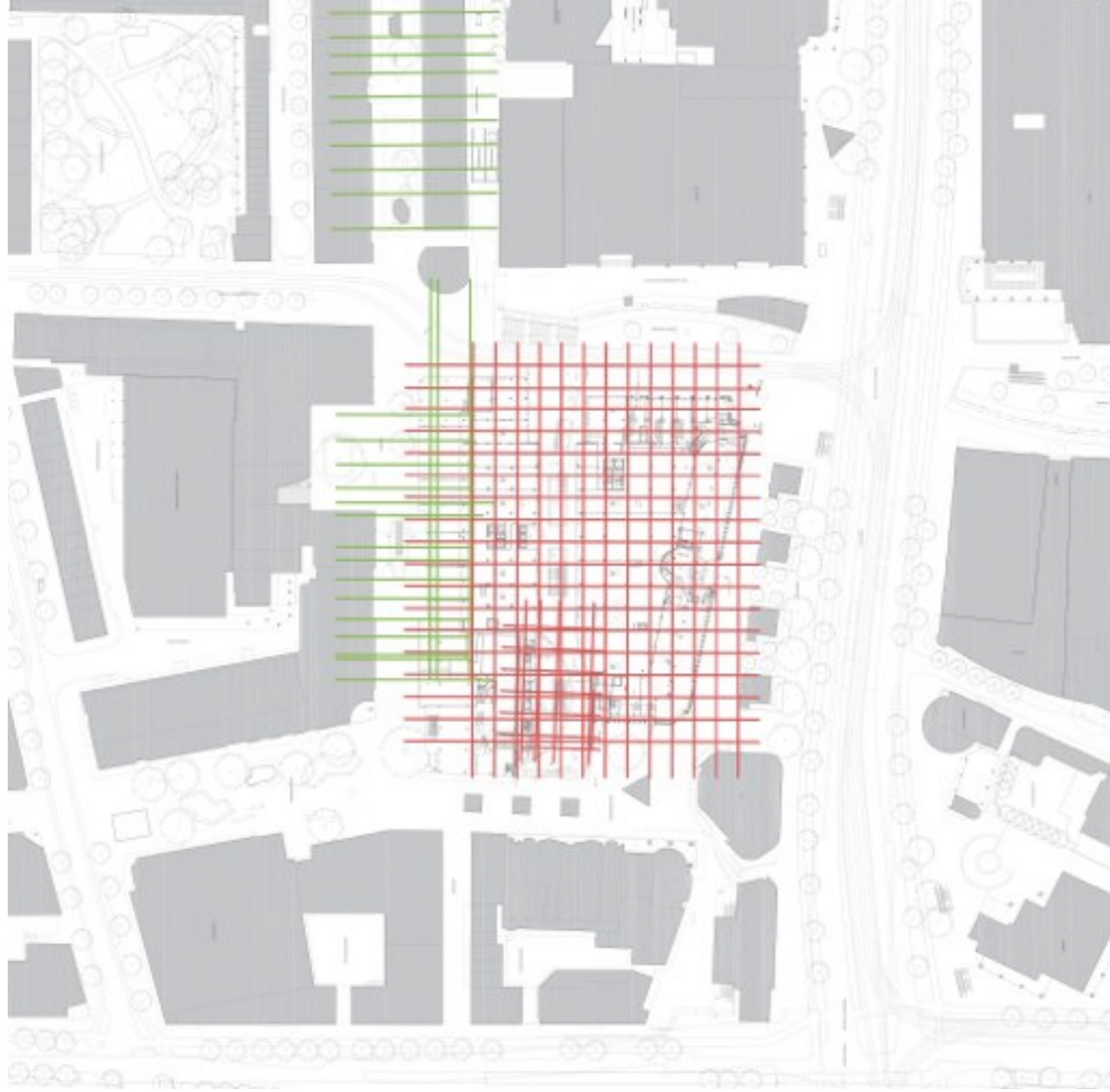


ROTTERDAM CONTEXT



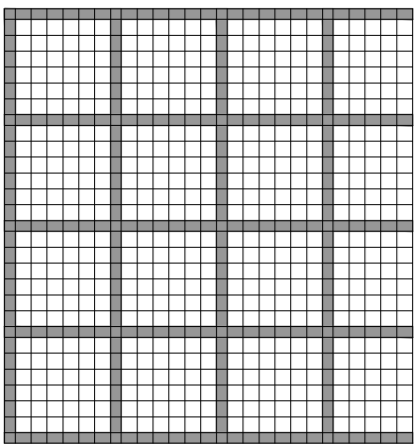
GRIDS

LIJNBAAN

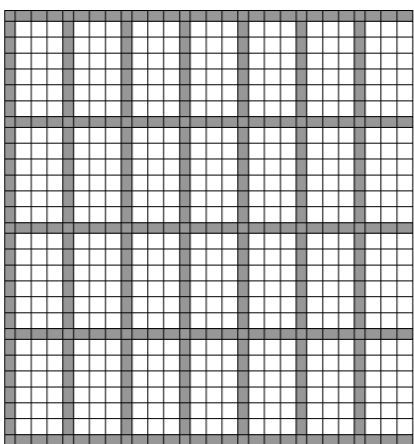


FORUM

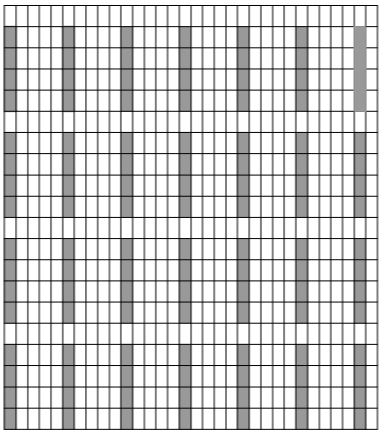
LIJNBAAN // GRID 110CM



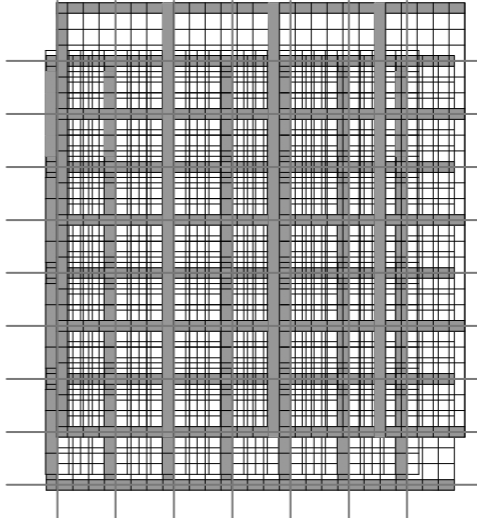
+



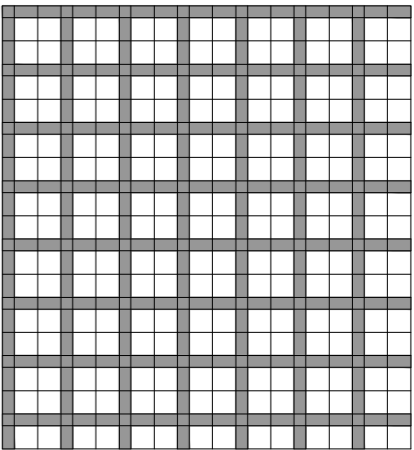
+



=



→

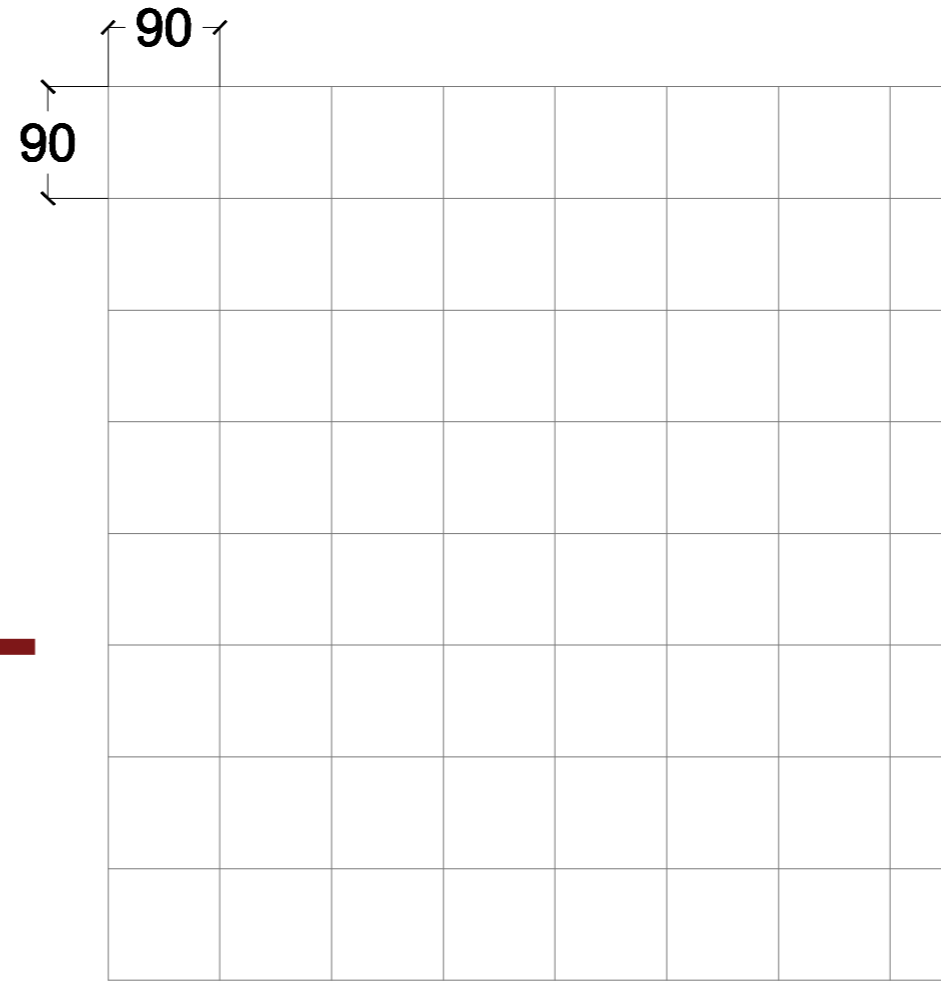
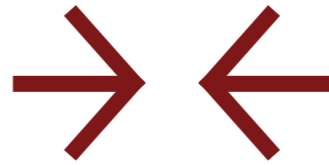
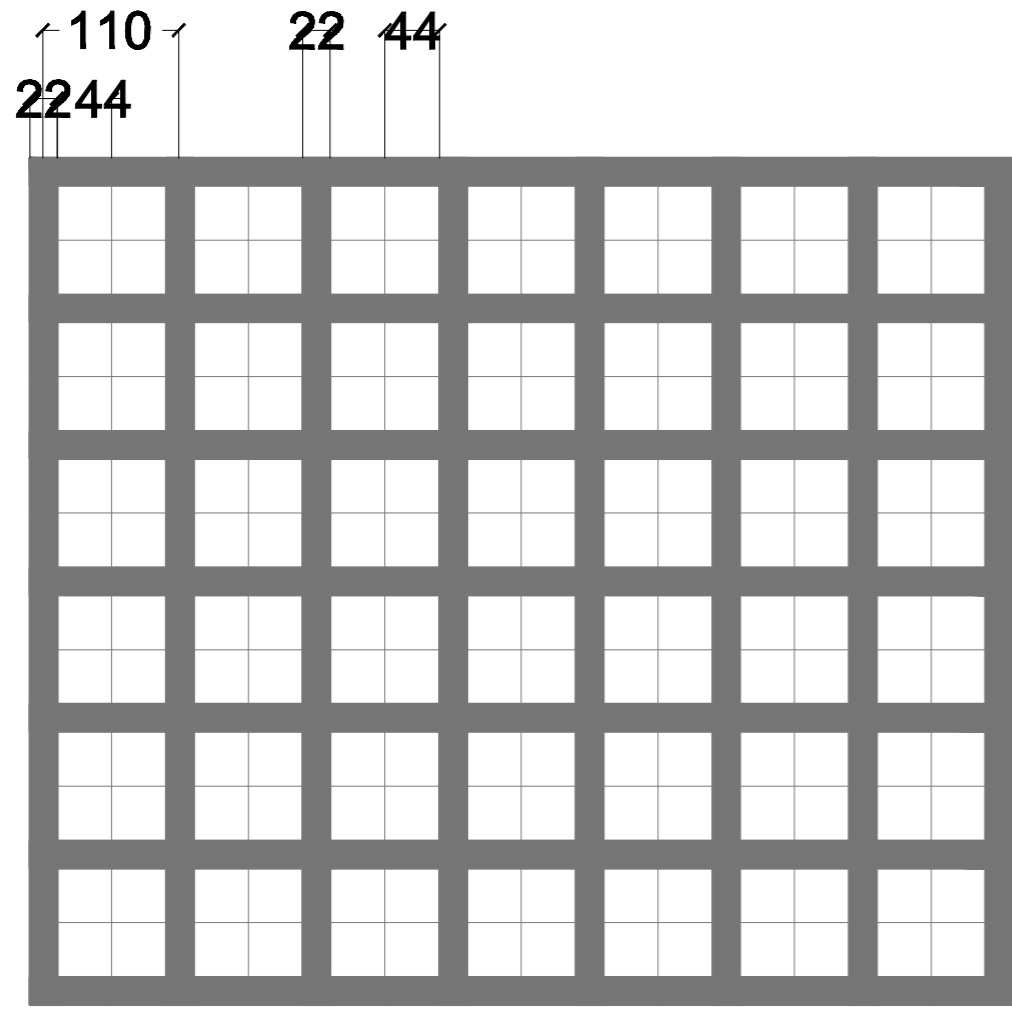


ORIGINAL PATTERNS

LIJNBAAN PATTERN TODAY

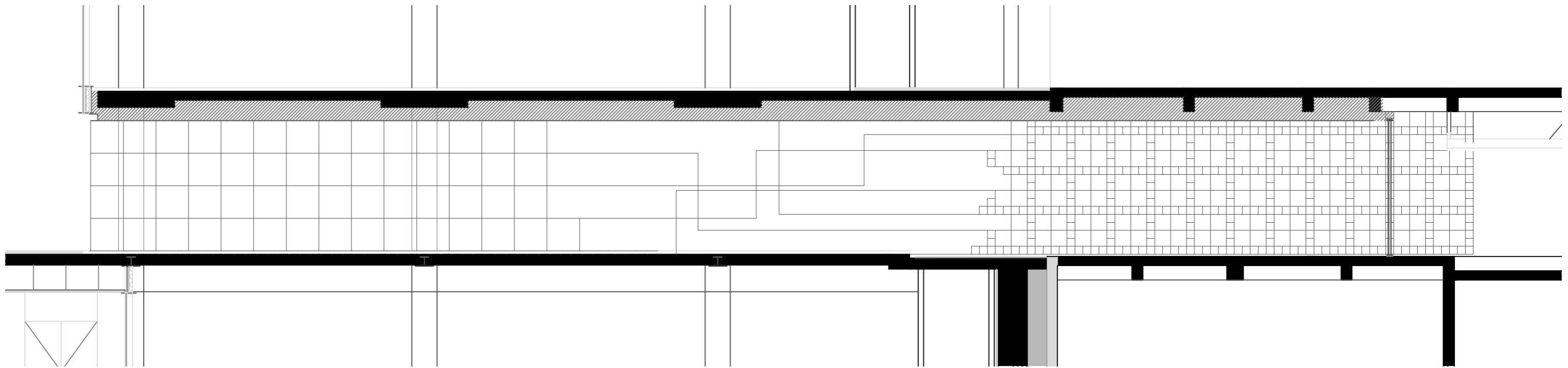
PATTERN WHICH REPRESENTS AUTHENTICITY OF LIJNBAAN AND CONNECTS WITH EXISTING PATTERN OF LIJNBAAN

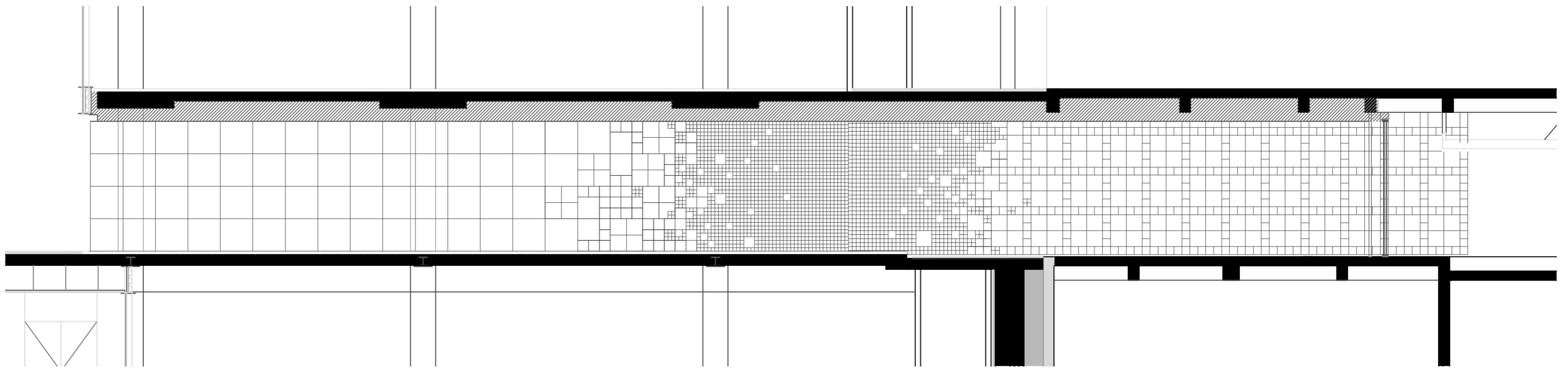
LIJNBAAN

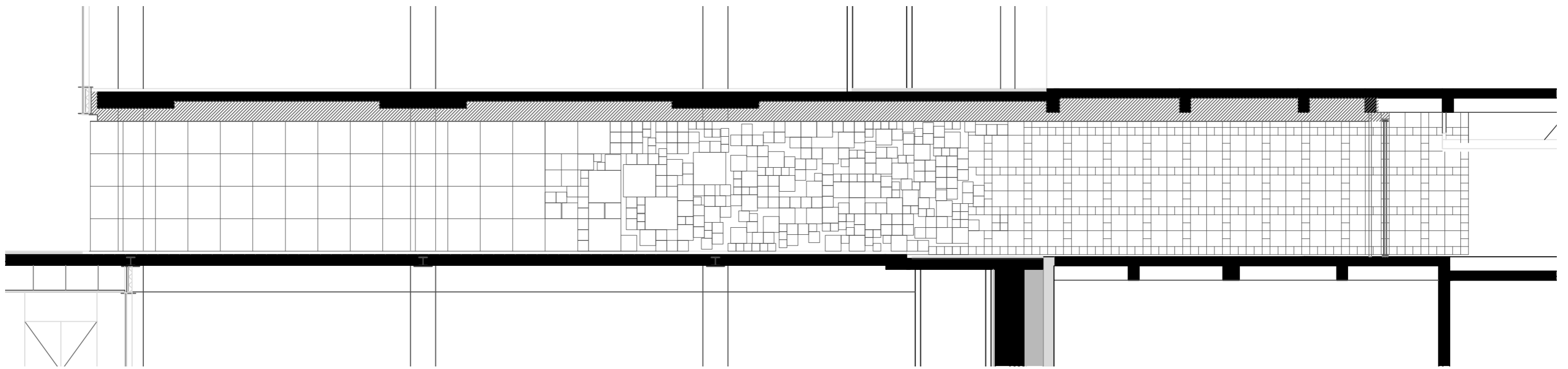


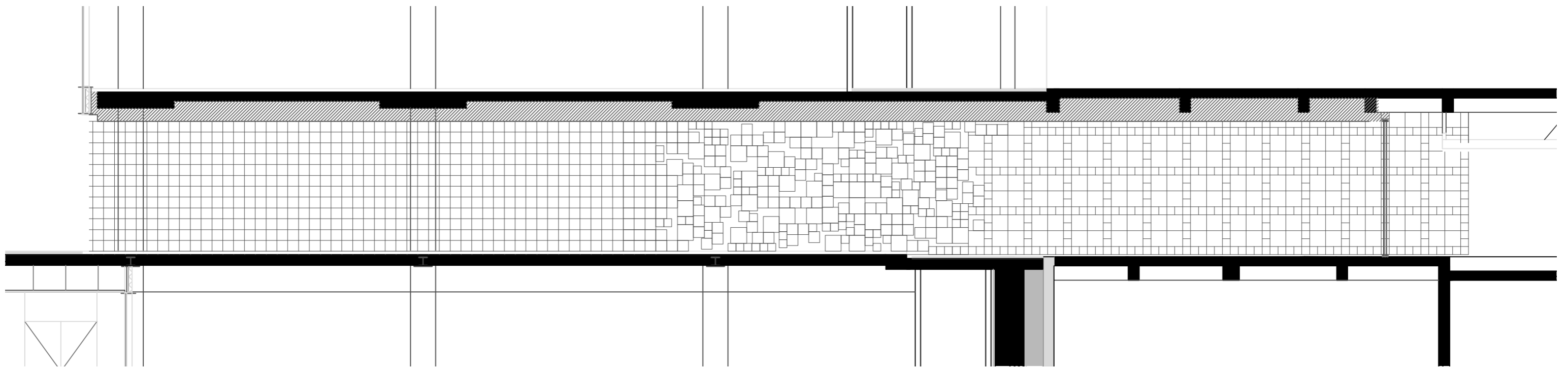
FORUM

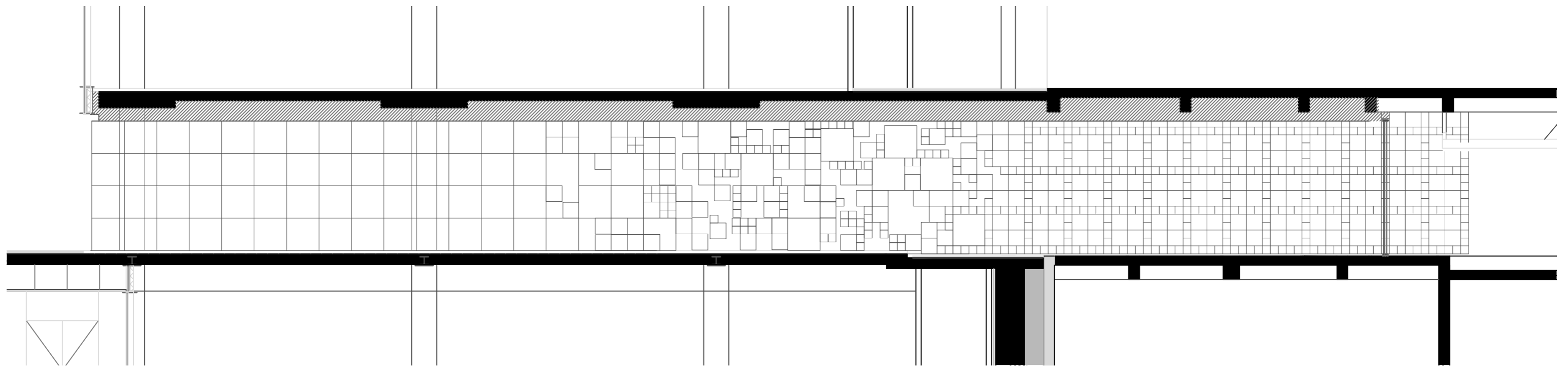
PATTERN

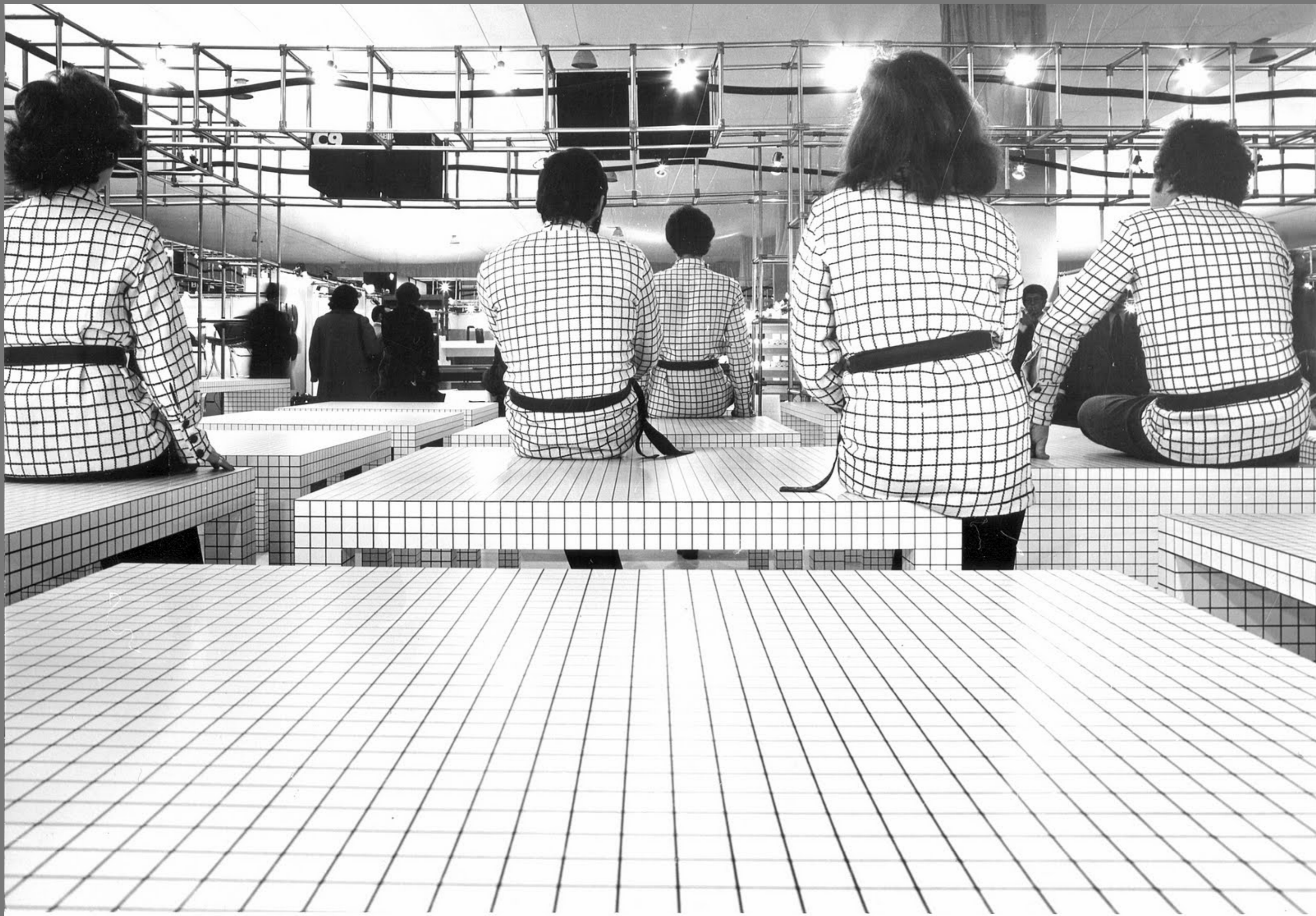






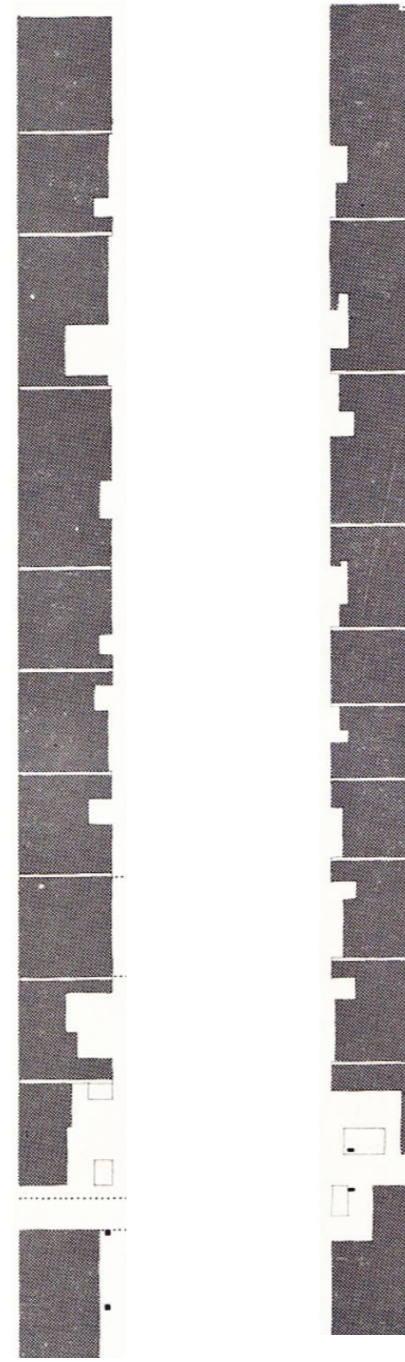






FACADE/ CONNECTION BETWEEN PRIVATE AND PUBLIC

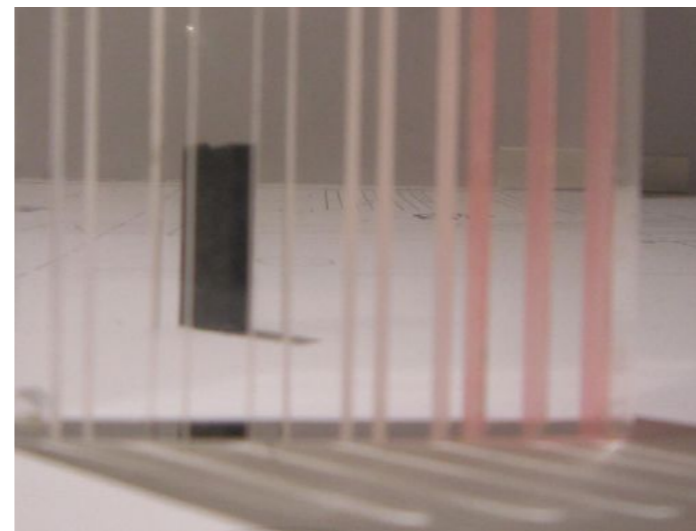
CANOPY
ACTIVITIES
FACADE
PAVEMENT
INTEGRITY



1960



NOW



PUBLIC SPACE ADAPTABLE

INTEGRITY

PAVEMENT

FACADE

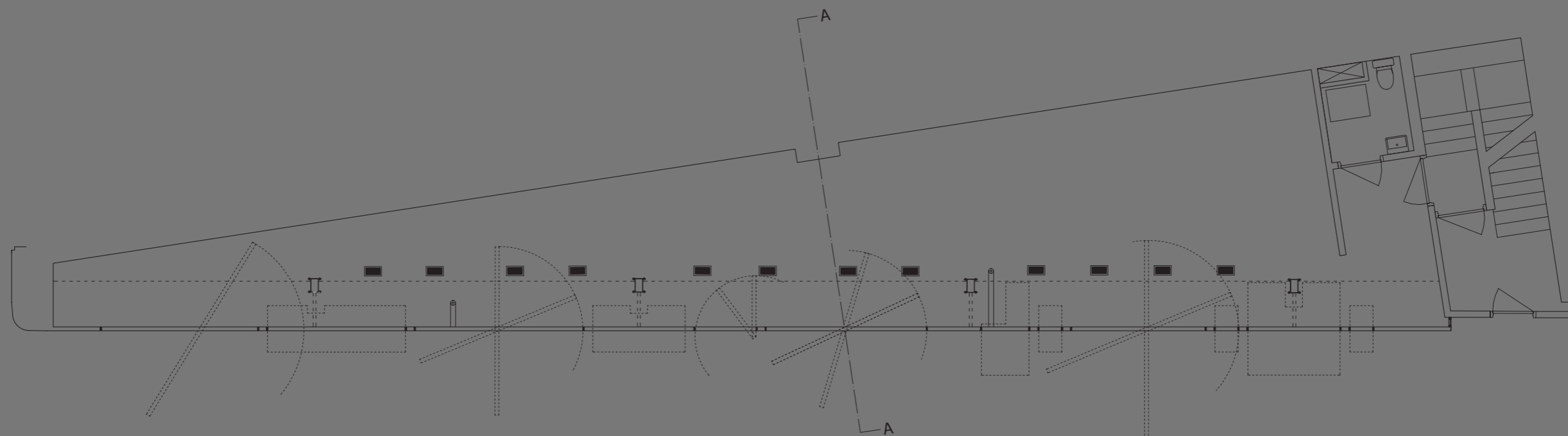
ACTIVITIES

CANOPY



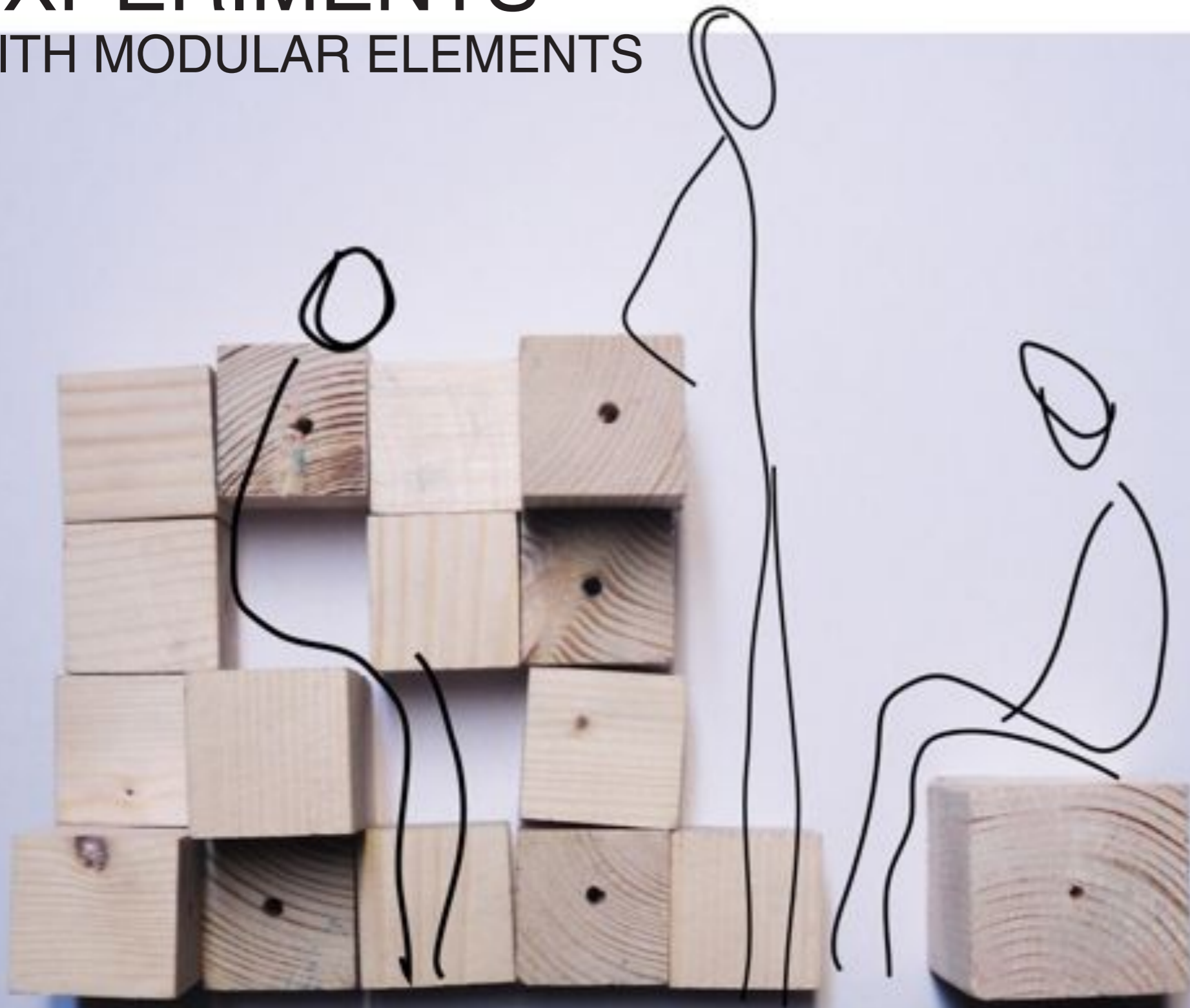
STOREFRON NY

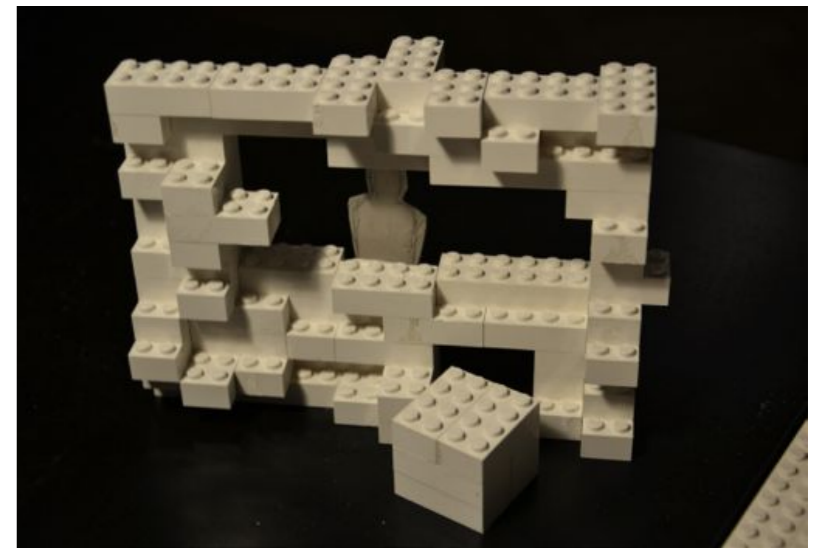
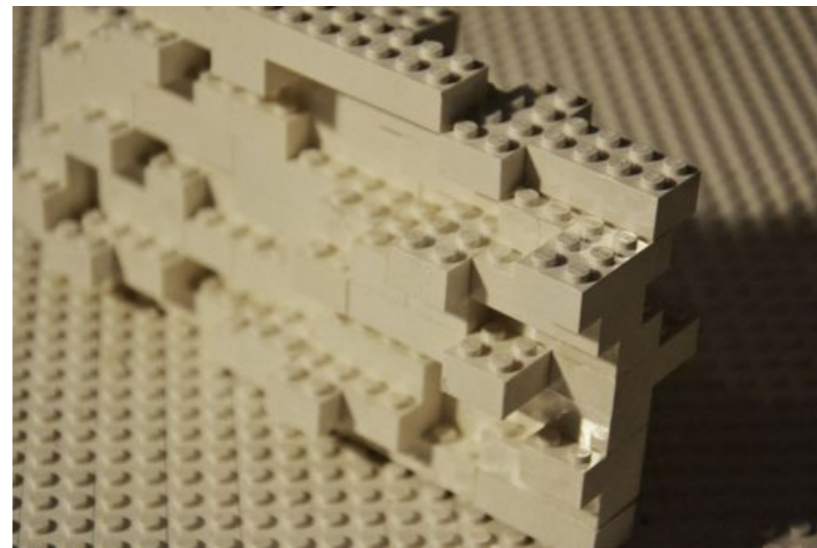
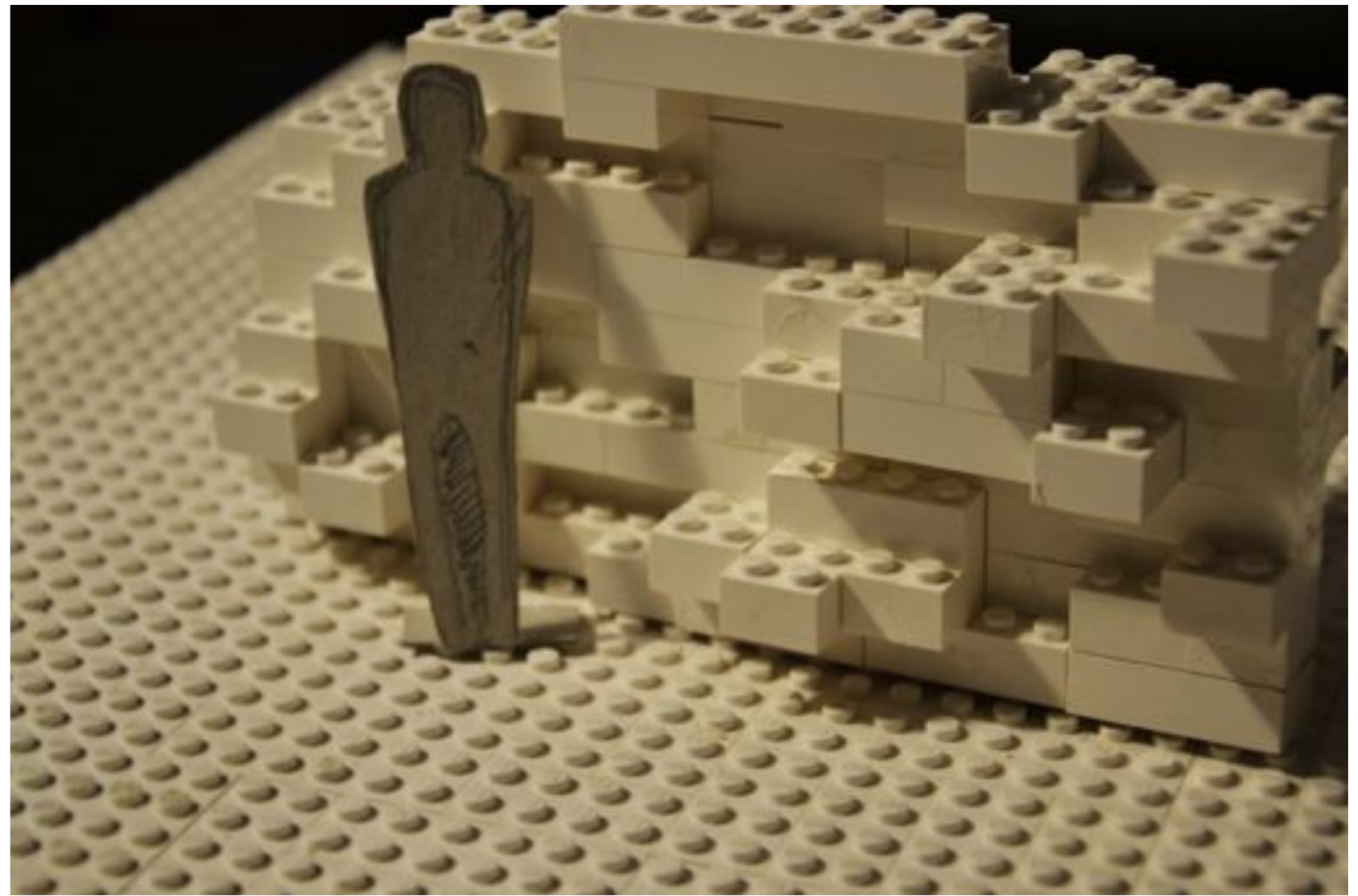
EXHIBITIONS
EVENTS
ETC



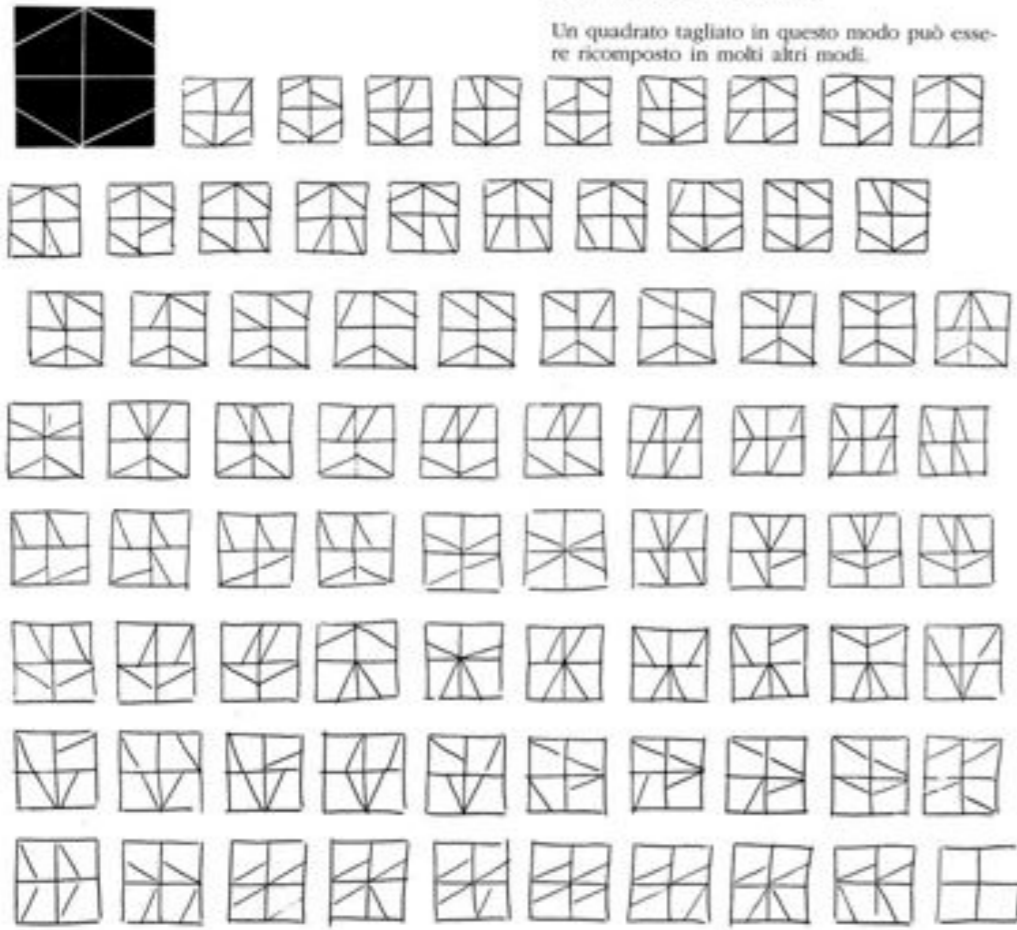
0 3 6 9 12 15 FEET

EXPERIMENTS WITH MODULAR ELEMENTS

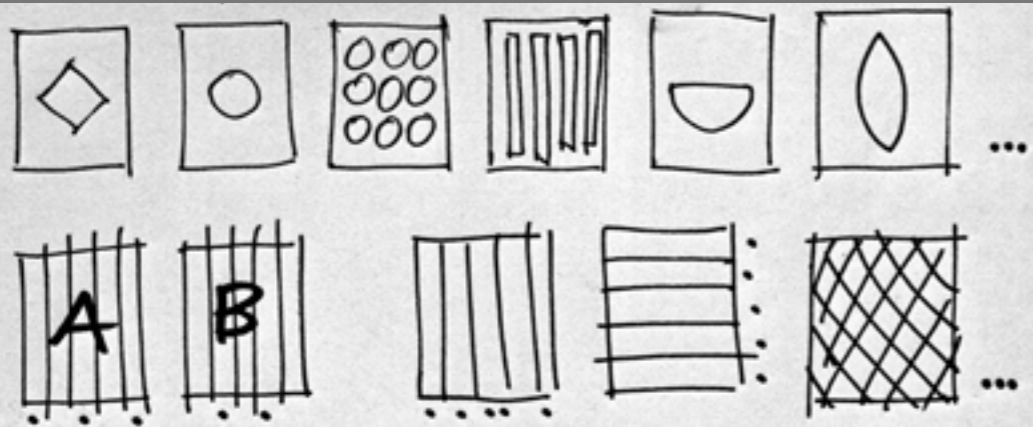




TAGLIO E RICOMPOSIZIONE



Un quadrato tagliato in questo modo può essere ricomposto in molti altri modi.



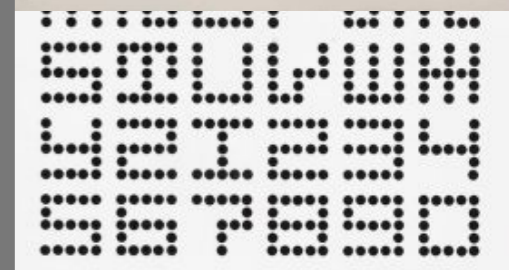
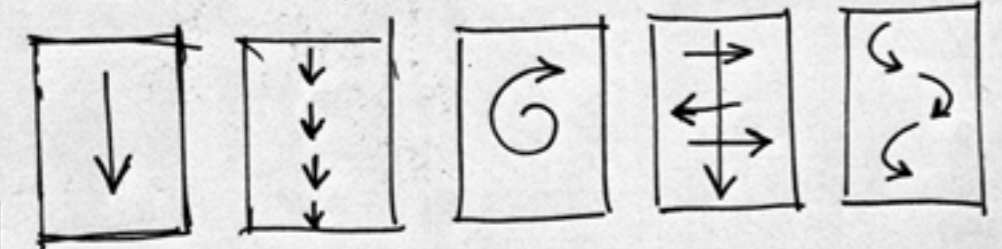
Taglio e ricomposizione A+B - idea.

(rifare foto con elaborazioni)

negativo?



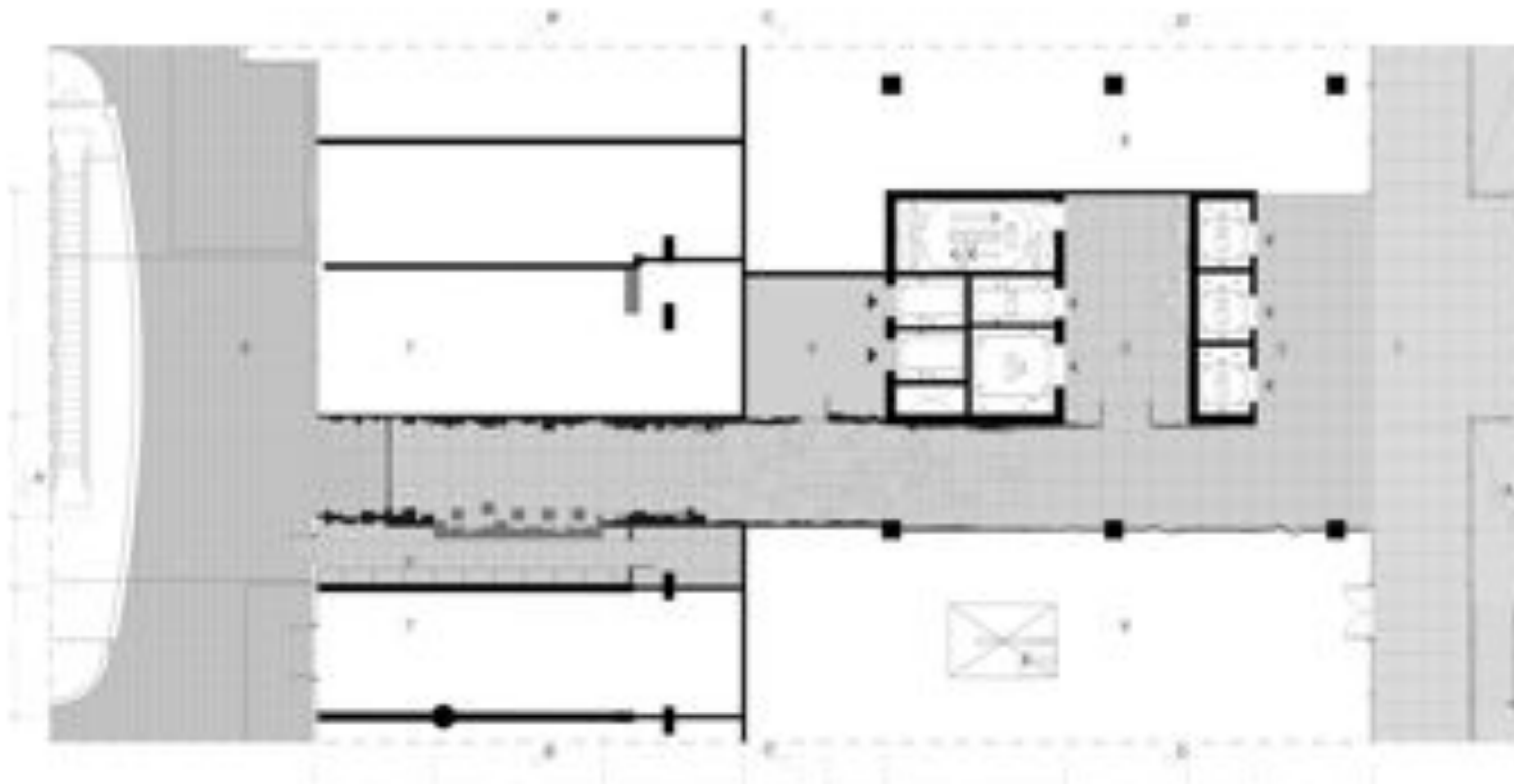
segno nero su bianco segno bianco in Texture invert

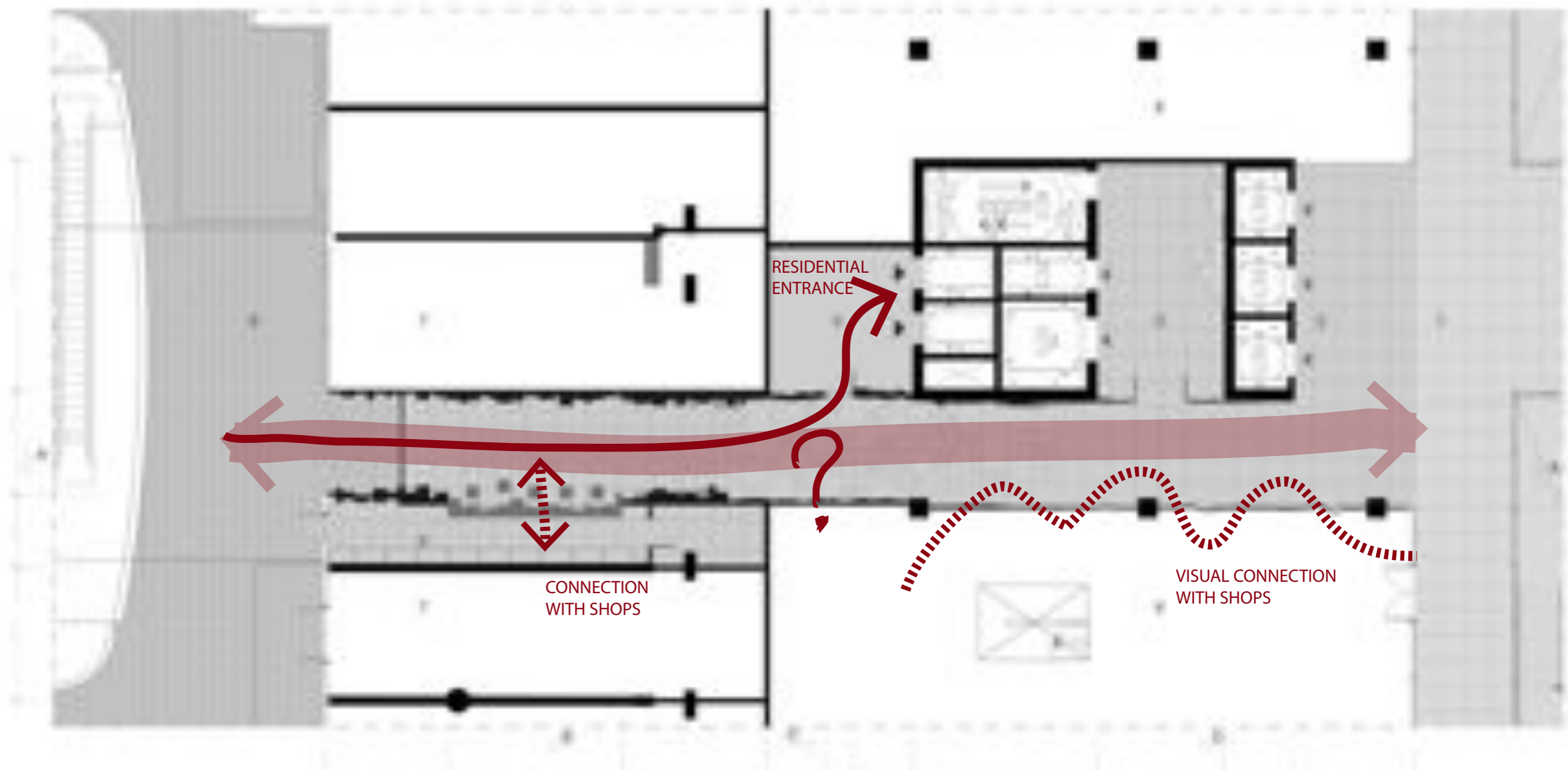


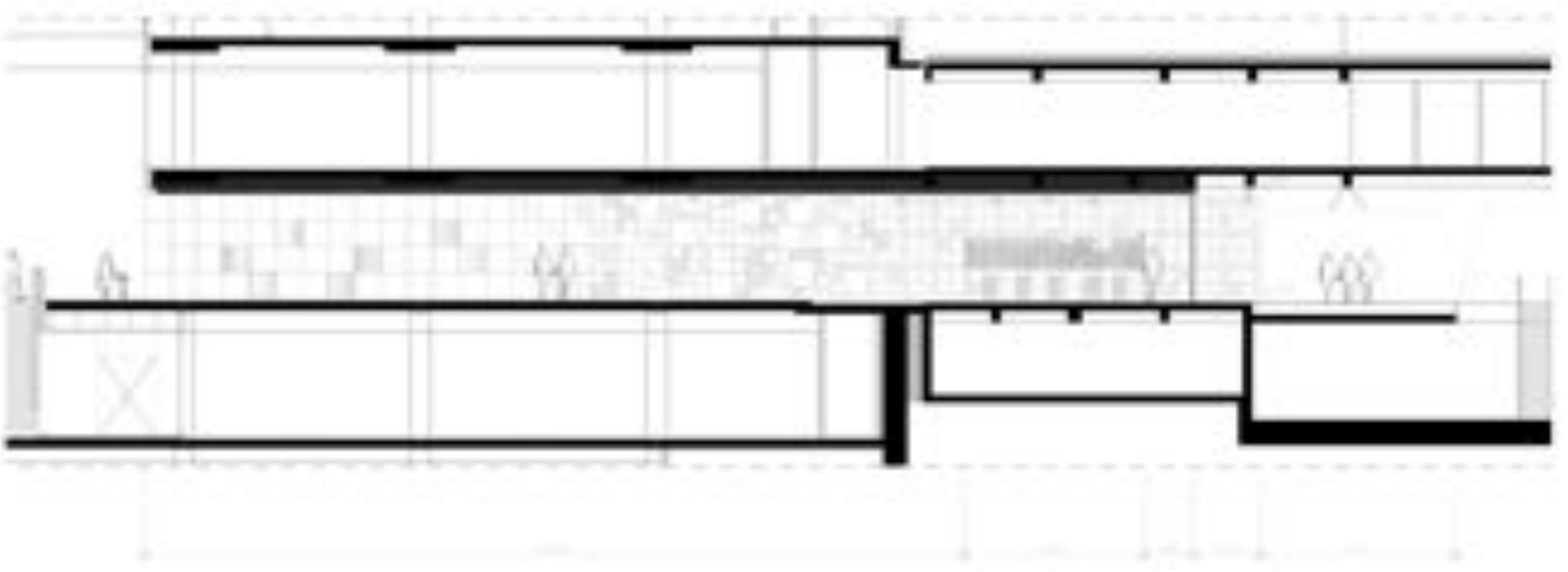
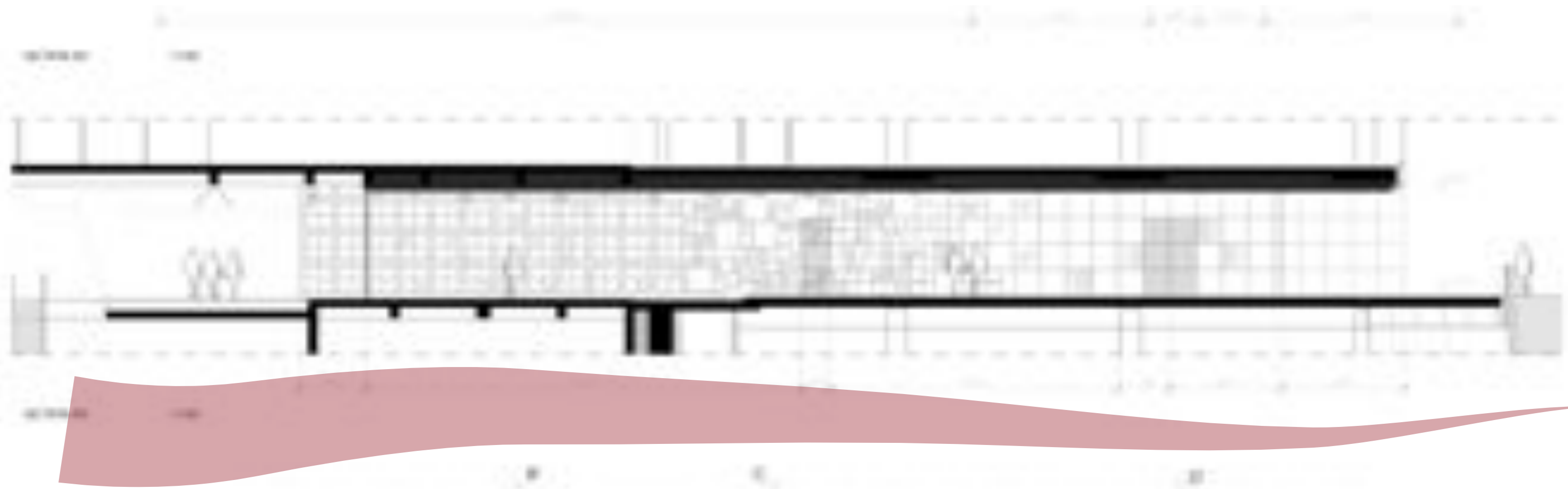
LIJNBAAN

MERGE

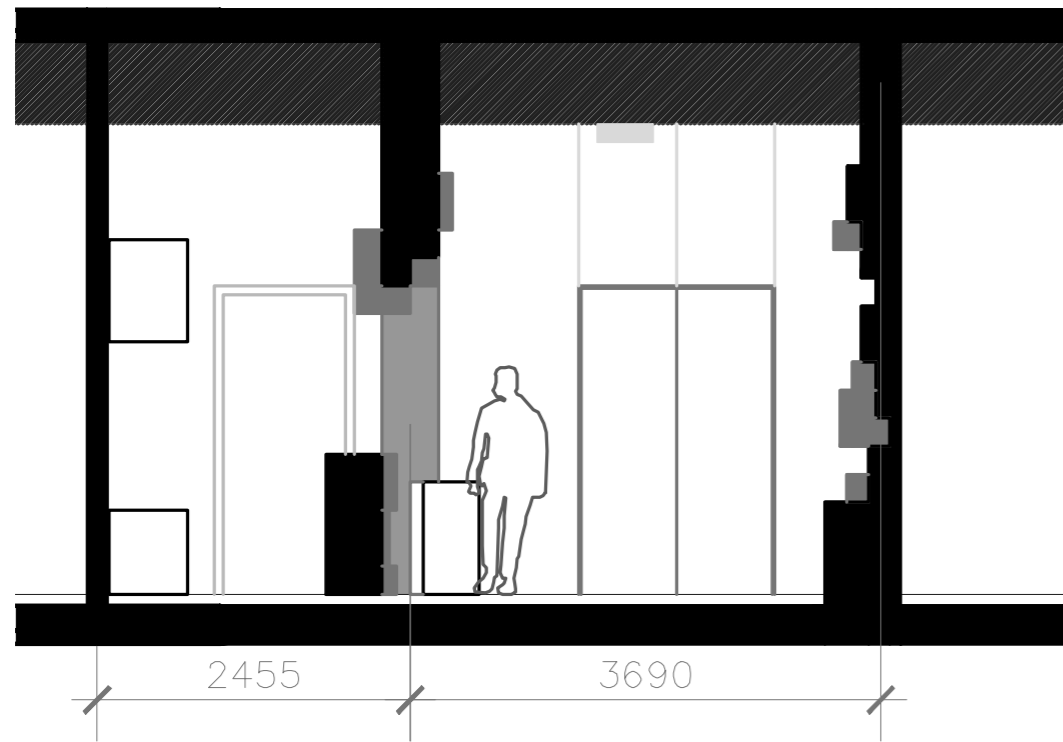
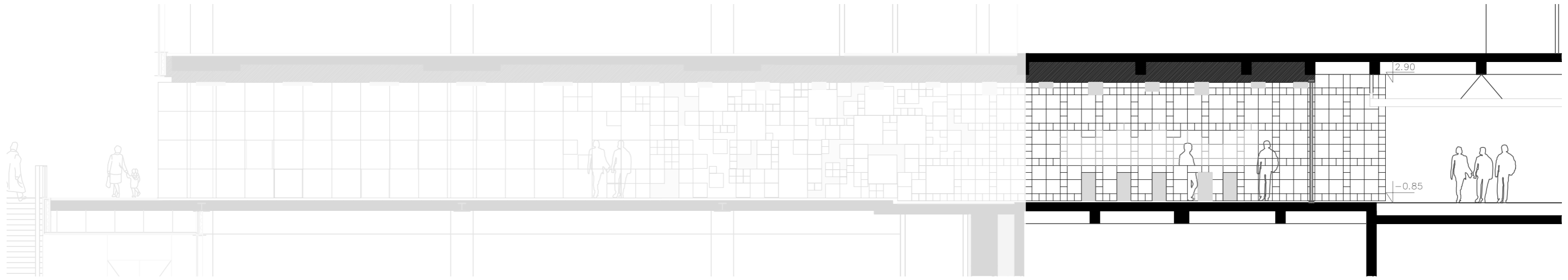
FORUM



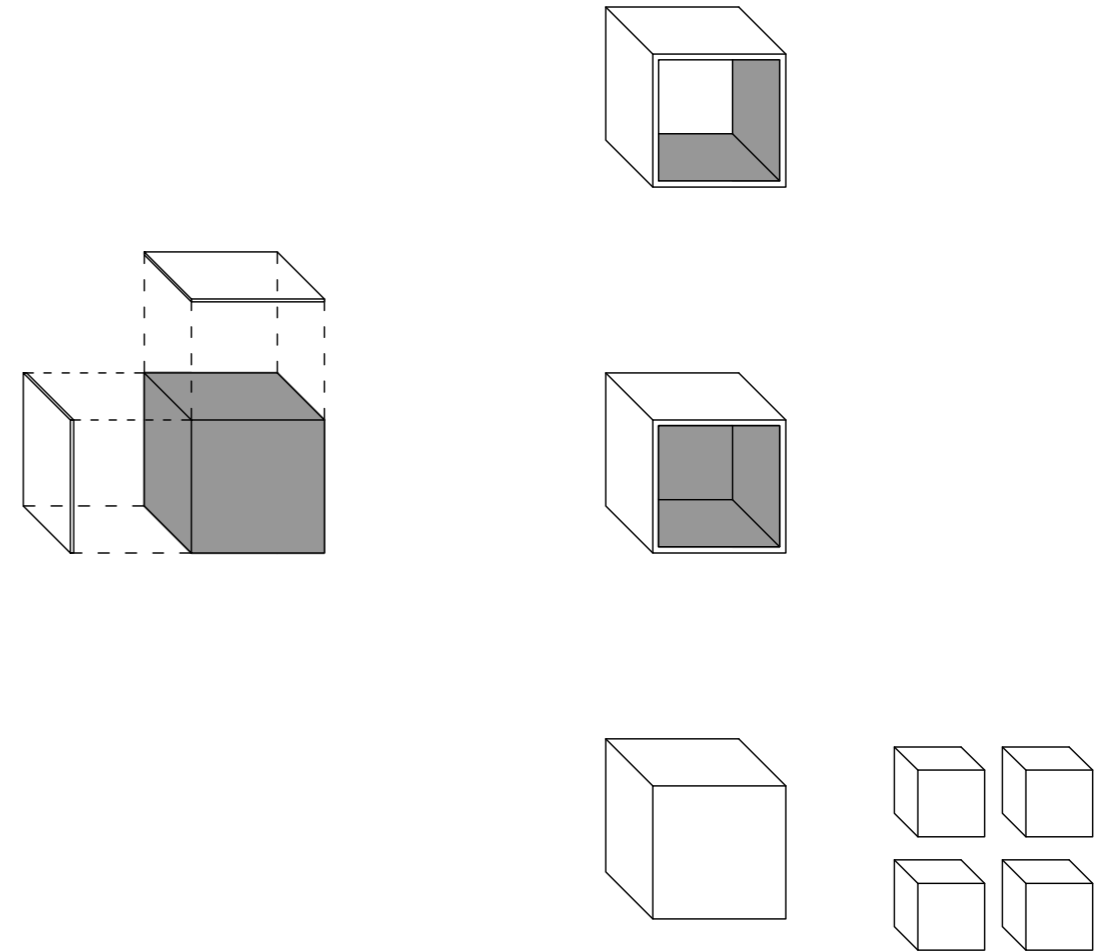




LIJNBAAN

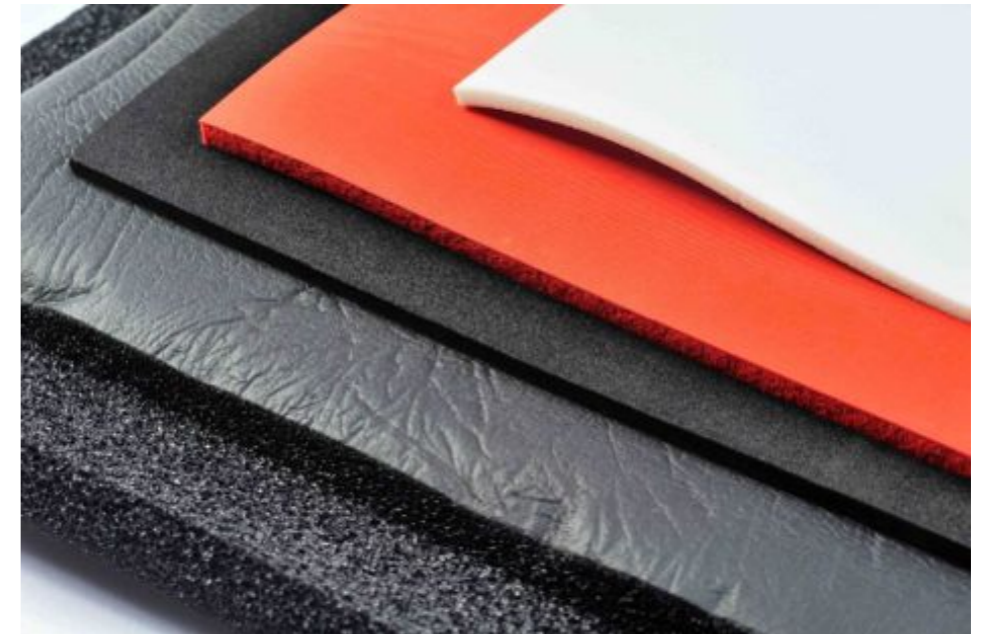
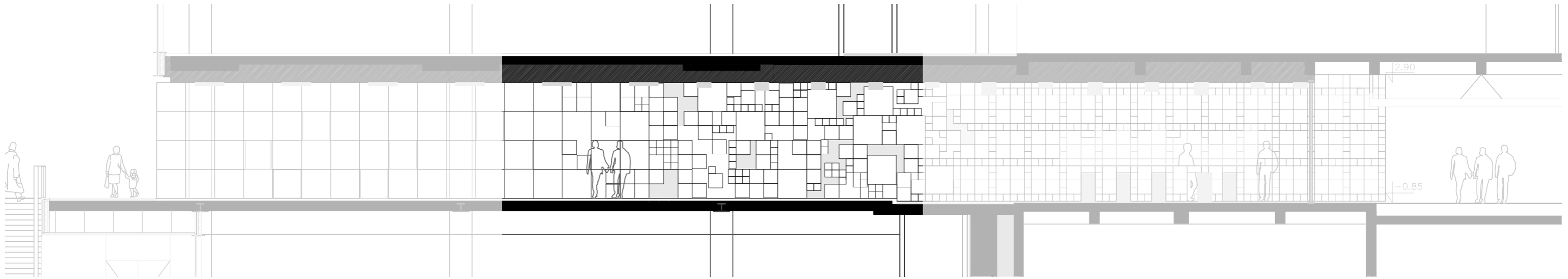


COFFEE





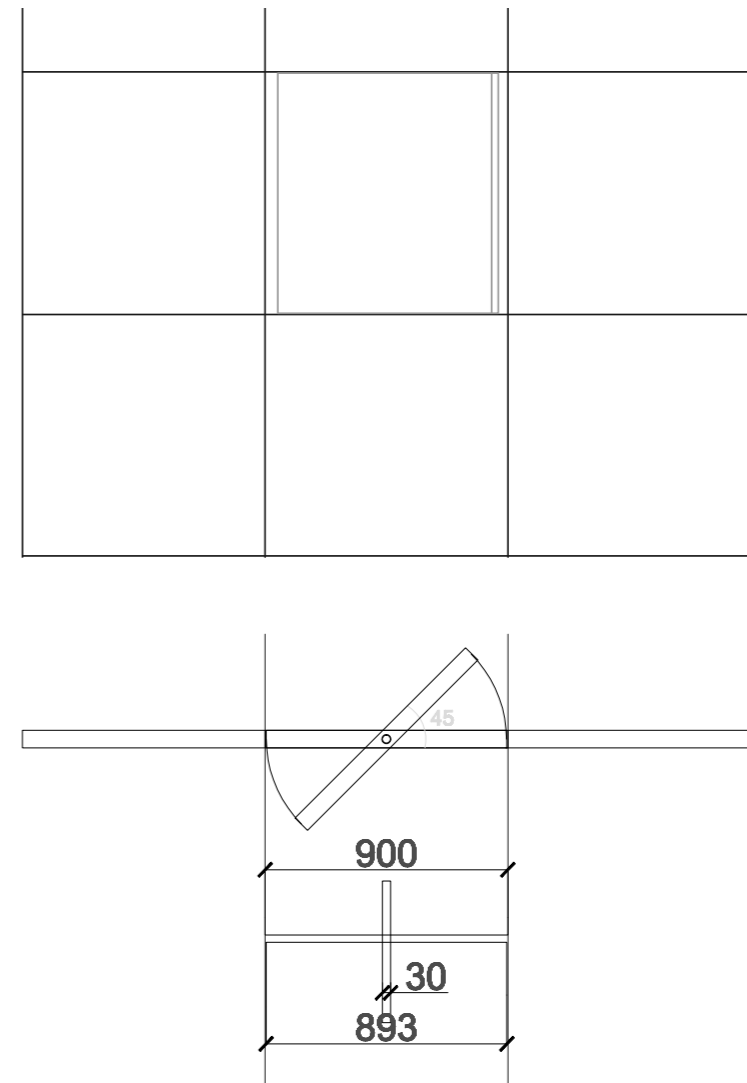
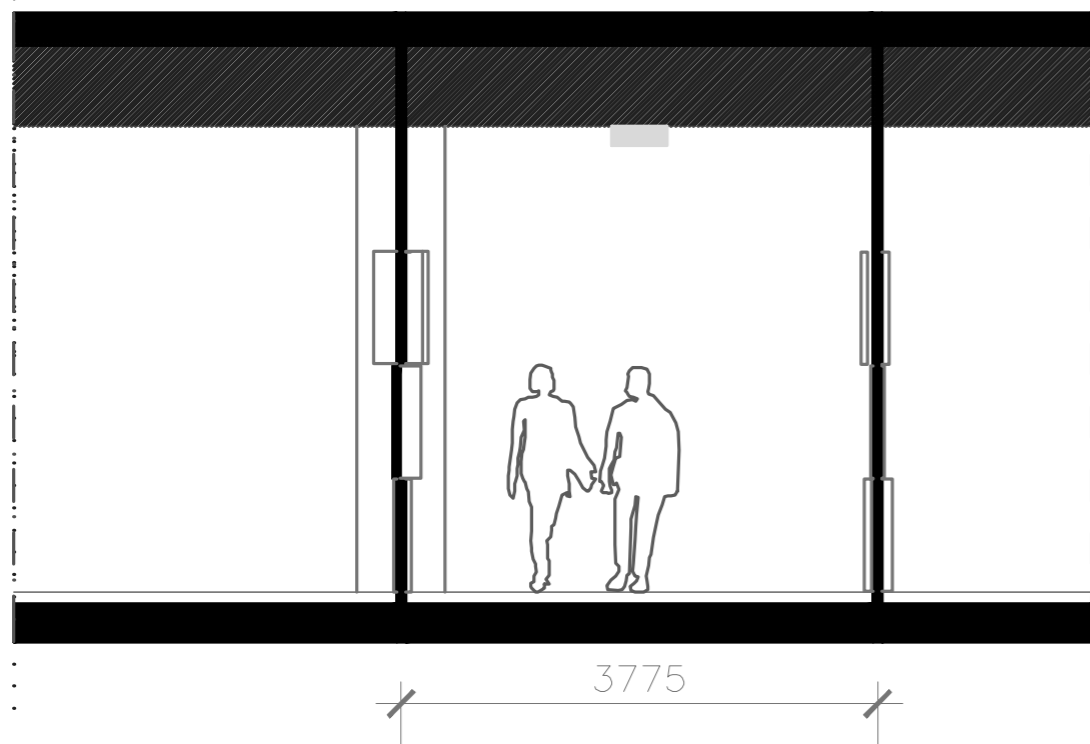
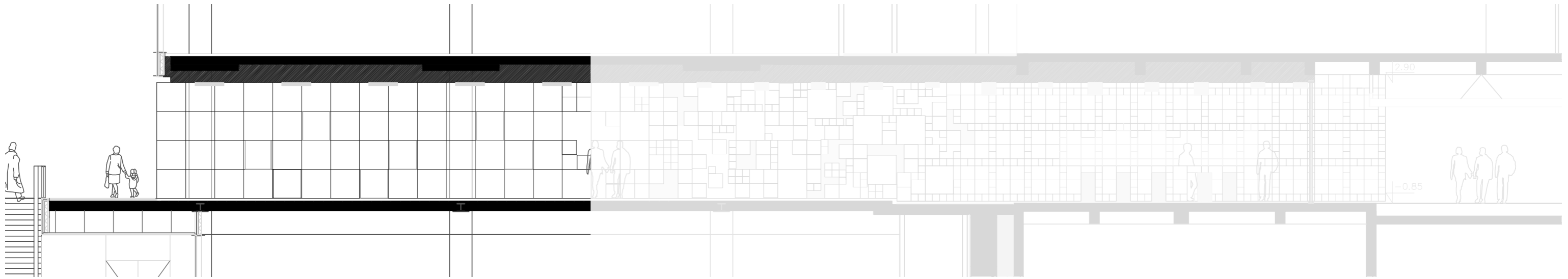
MERGE



**SOFT MATERIAL
IN THE MERGE**



FORUM



LINK WITH SHOPS

VISUAL INTERACTION

SUBTLE MERGE TO SHOPPING

MOVABLE



MATERIALS

TILES

CERAMIC

WHITE WALLS



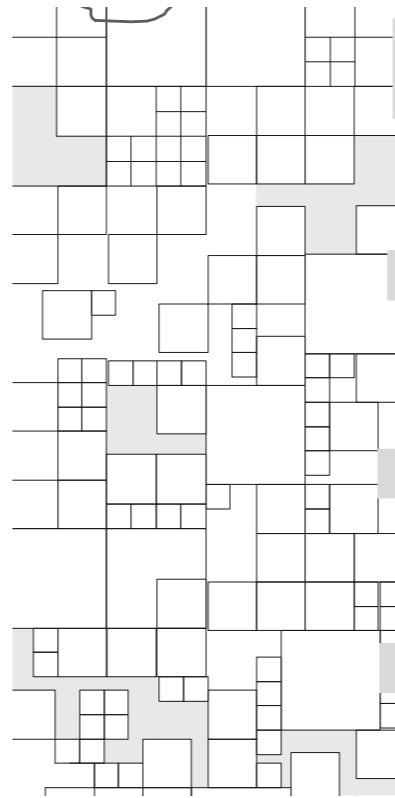
GREY FLOOR



SOFT MATERIAL
IN BETWEEN

RUBBER

GREY



LIGHTS

POLYETHYLENE

WHITE

